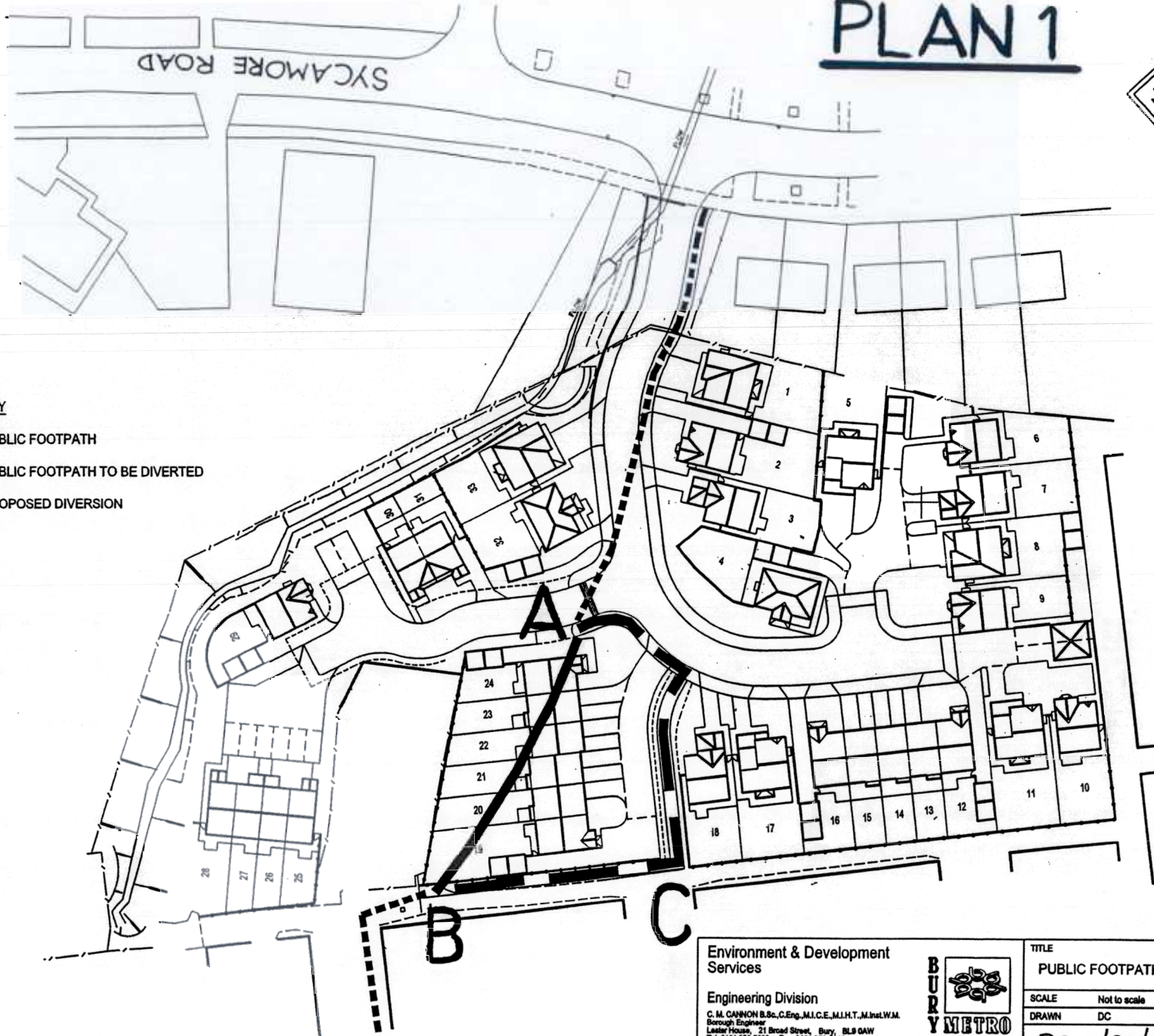
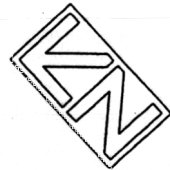





# PLAN 1



**KEY**

-  PUBLIC FOOTPATH
-  PUBLIC FOOTPATH TO BE DIVERTED
-  PROPOSED DIVERSION

Environment & Development  
Services

Engineering Division  
C. M. CANNON B.Sc., C.Eng., M.I.C.E., M.I.H.T., M.Inst.W.M.  
Borough Engineer  
Lester House, 21 Broad Street, Bury, BL9 0AW  
Tel. 0161 253 5628 Fax. 0161 253 5310



TITLE		
PUBLIC FOOTPATH NO. 88, TOTTINGTON		
SCALE	Not to scale	DATE
DRAWN	DC	CHECKED
PRW/88/TOTT/DC/1		





Lester House  
21 Broad Street  
Bury, BL9 0AW  
Tel. 0161 253 5828  
Fax. 0161 253 5310

Environment & Development Services  
Engineering Division

OS No.

Drawn by: DC

Date: 19/09/03

Scale: 1:10000

© Crown copyright.

PHOTOGRAPHIC COPY LIABLE TO DISTORTION IN SCALE

This plan is for guidance purposes only and the Council do not accept any liability whatsoever as to the accuracy of the information contained within it, or from any loss or damage resulting from reliance upon it.



# PLAN 2

Public Footpath ———  
Bridleway -|-|-



Title: EXTRACT FROM DEFINITIVE MAP  
PRW/88/TOTT/DC/2



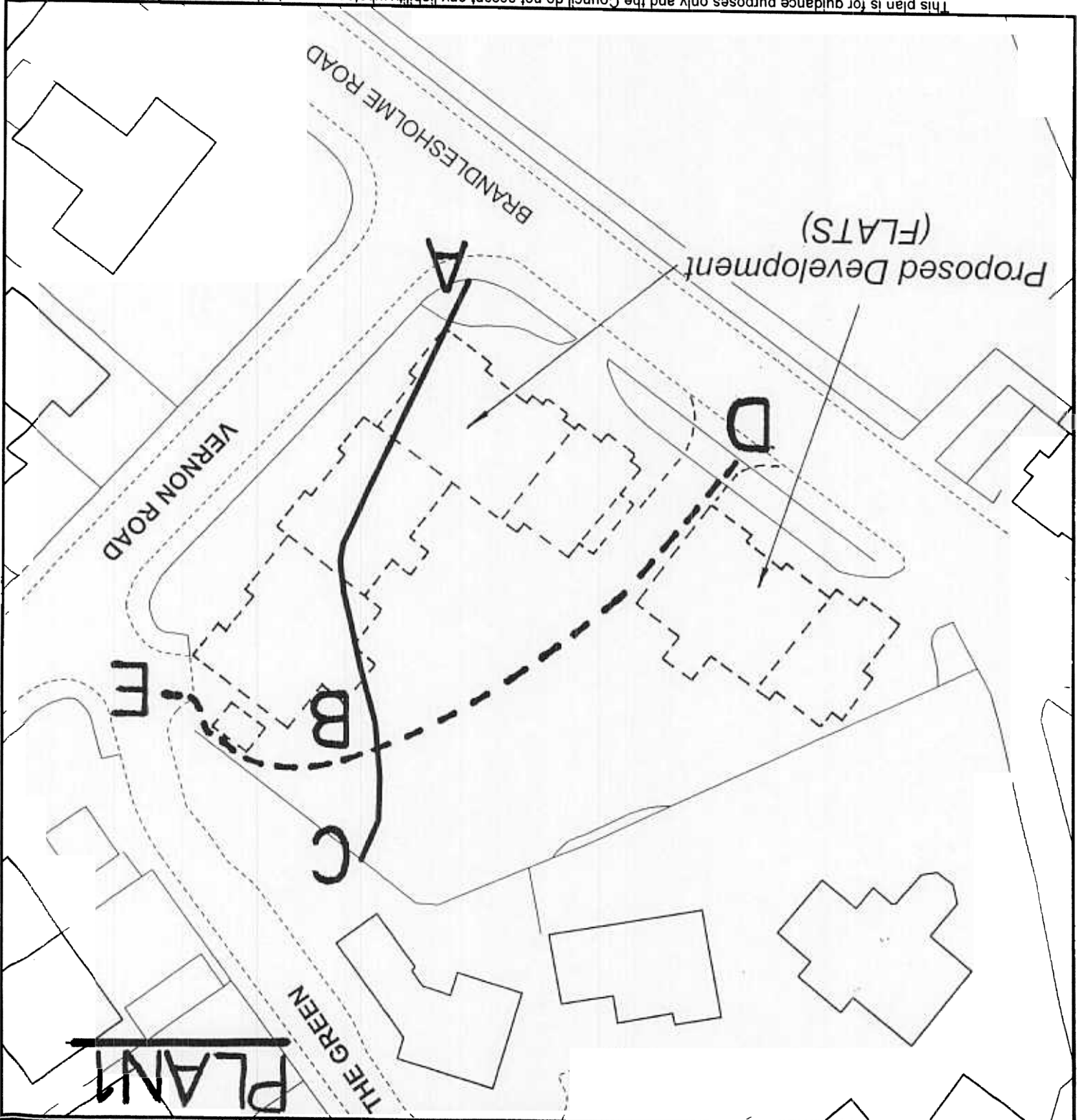
Environment & Development  
 Services  
 Engineering Division  
 Lester House  
 21 Broad Street, Bury, BL9 0AW  
 Telephone 0161 253 5828  
 Fax 0161 253 5310

PLAN PRW/38/TOTT/DC/1  
 SCALE 1:500  
 DRAWN BY DC  
 OS No. SD7714SE  
 DATE August 2003



Reproduced from the Ordnance Survey mapping with the permission of the Controller of Her Majesty's Stationery Office. (C) Crown Copyright. Unauthorised reproduction infringes Crown Copyright and may lead to civil proceedings. Bury M.B.C. LA076139.

PHOTOGRAPHIC COPY LIABLE TO DISTORTION IN SCALE  
 This plan is for guidance purposes only and the Council do not accept any liability whatsoever as to the accuracy of the information contained within it, or from any loss or damage resulting from reliance upon it.



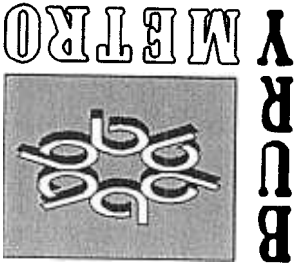
PLAN 1

APPLICATION TO CLOSE PART OF PUBLIC FOOTPATH No. 38, TOTTINGTON AND TO CREATE PUBLIC FOOTPATH No. 107, TOTTINGTON.

Closure  
 Creation







Lester House  
 21 Broad Street  
 Bury, BL9 0AW  
 Tel. 0161 253 5828  
 Fax. 0161 253 5310

OS No:

Drawn by: DC

Date: 19/09/03

Scale: 1:10000

Environment & Development Services  
 Engineering Division

PHOTOGRAPHIC COPY LIABLE TO DISTORTION IN SCALE

© Crown copyright.

This plan is for guidance purposes only and the Council do not accept any liability whatsoever as to the accuracy of the information contained within it, or from any loss or damage resulting from reliance upon it.



# PLAN 2

Public Footpath ———  
 Bridleway -|-|-



PRW/38/TOTT/DC/2

Title: EXTRACT FROM DEFINITIVE MAP